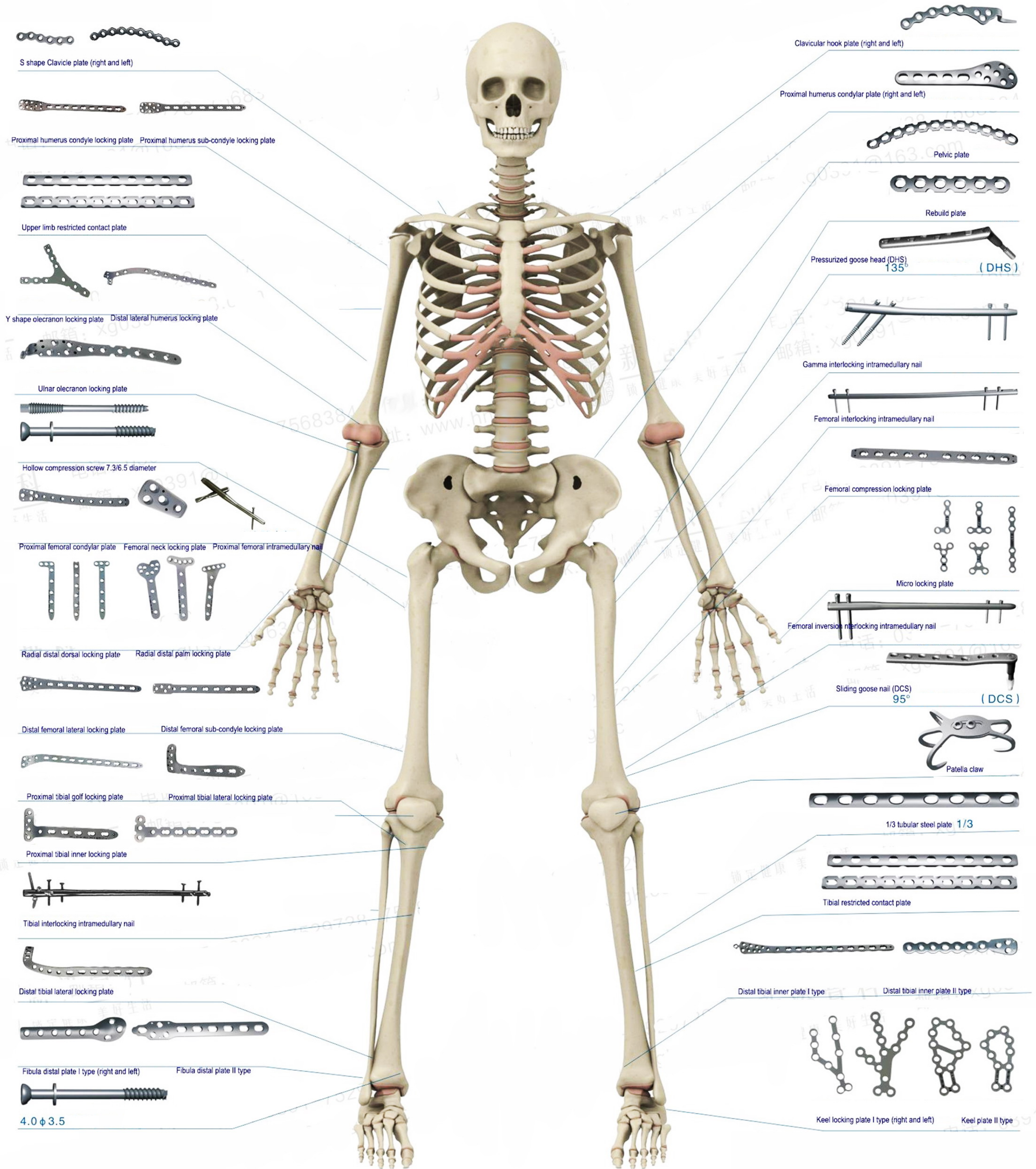


INTEZAR CNC

ENTERPRISES



Address :
 Khan Mahal Road,
 Sialkot-51310 PAKISTAN
 Ph: +92 322 735 0580
 E-mail: info@intezarcnc.com
 Web: www.intezarcnc.com



Oscillating saw blades type Synthes AO connection

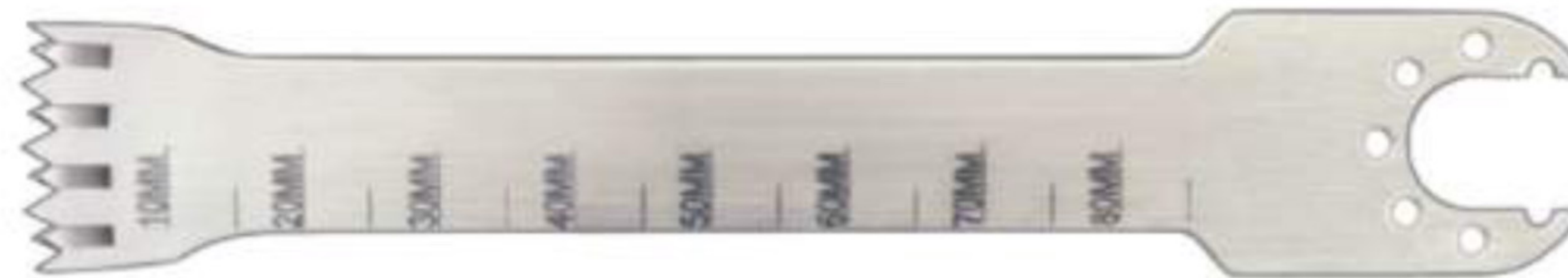
Ref.: depth of cut 85 mm / 3.346 in. X width 25 mm / 0.984 in.

Blade - cutting thickness

1.00 mm / 0.39 in.

1.27 mm / 0.50 in.

1.37 mm / 0.54 in.



Oscillating saw blades type Synthes AO connection

Ref.: depth of cut 85 mm / 3.346 in. X width 19 mm / 0.750 in.

Blade - cutting thickness

1.00 mm / 0.39 in.

1.27 mm / 0.50 in.

1.37 mm / 0.54 in.



Oscillating saw blades type Synthes AO connection

Ref.: depth of cut 85 mm / 3.346 in. X width 13 mm / 0.512 in.

Blade - cutting thickness

1.00 mm / 0.39 in.

1.27 mm / 0.50 in.

1.37 mm / 0.54 in.



Oscillating saw blades type Aesculap connection

Ref.: depth of cut 85 mm / 3.346 in. X width 13 mm / 0.512 in.

Blade - cutting thickness

1.00 mm / 0.39 in.

1.27 mm / 0.50 in.

1.37 mm / 0.54 in.



Oscillating saw blades type Aesculap connection

Ref.: depth of cut 85 mm / 3.346 in. X width 19 mm / 0.750 in.

Blade - cutting thickness

1.00 mm / 0.39 in.

1.27 mm / 0.50 in.

1.37 mm / 0.54 in.



Oscillating saw blades type Stryker connection System 6

Ref.: depth of cut 85 mm / 3.346 in. X width 23 mm / 0.905 in.

Blade - cutting thickness

1.00 mm / 0.39 in.

1.27 mm / 0.50 in.

1.37 mm / 0.54 in.



Oscillating saw blades type „NEW“ Stryker connection

Ref.: depth of cut 85 mm / 3.346 in. X width 25 mm / 0.984 in.

Blade - cutting thickness

1.00 mm / 0.39 in.

1.27 mm / 0.50 in.

1.37 mm / 0.54 in.



Oscillating saw blades type AMSCO Hall connection

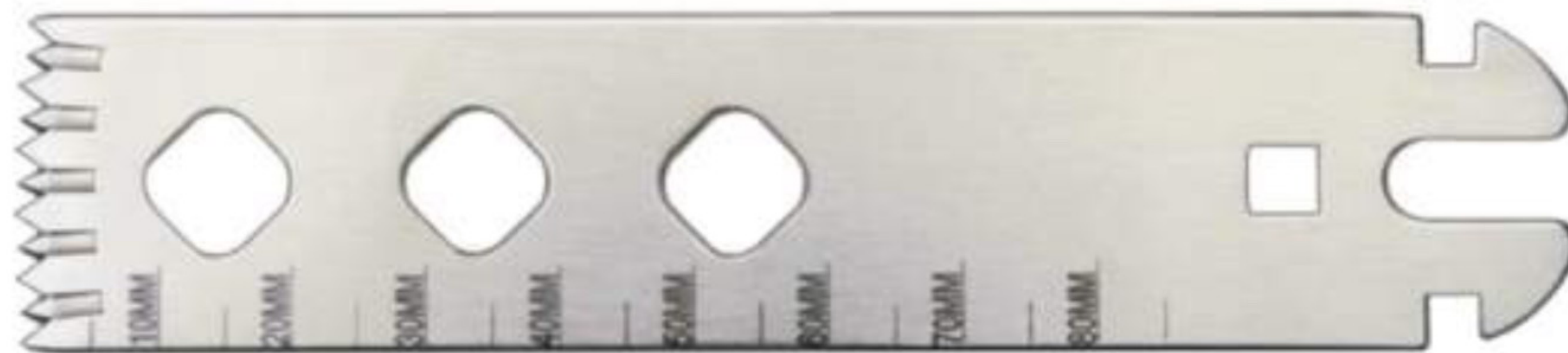
Ref.: depth of cut 85 mm / 3.346 in. X width 25 mm / 0.984 in.

Blade - cutting thickness

1.00 mm / 0.39 in.

1.27 mm / 0.50 in.

1.37 mm / 0.54 in.



Oscillating saw blades type De Soutter DPX connection

Ref.: depth of cut 85 mm / 3.346 in. X width 25 mm / 0.984 in.

Blade - cutting thickness

1.00 mm / 0.39 in.

1.27 mm / 0.50 in.

1.37 mm / 0.54 in.



Reciprocator blade type HALL connection

Ref.: depth of cut 90 mm / 3.346 in. X width 12.4 mm / 0.488 in.

Blade - cutting thickness

1.20 mm / 0.47 in.



Reciprocator blade type connection used for Sternum Saw

Ref.: depth of cut 34 mm / 1.338 in. X width 7.0 mm / 0.275 in.

Blade - cutting thickness

1.00 mm / 0.39 in.